

B - SACOINF

1x (B1) Ref.7001



4x (B2) 4x40



4x (B3) M6x30



62x (B4) 3,5x19



52x (B5) 3,5x25



C - SACOSUP0001

2x (C1) Ref. 3003



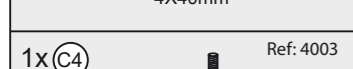
2x (C2) Ref. 5001



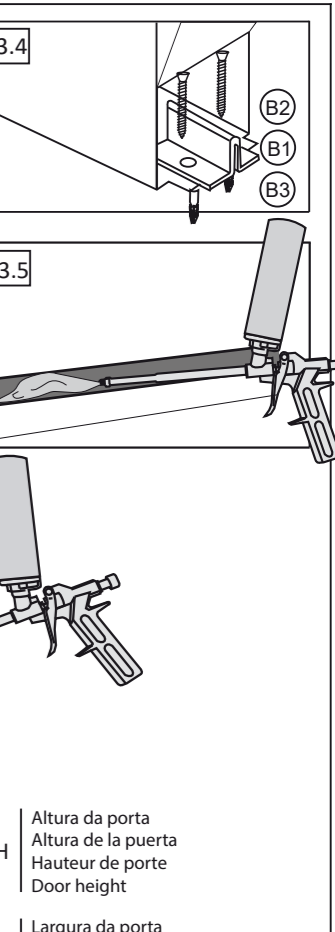
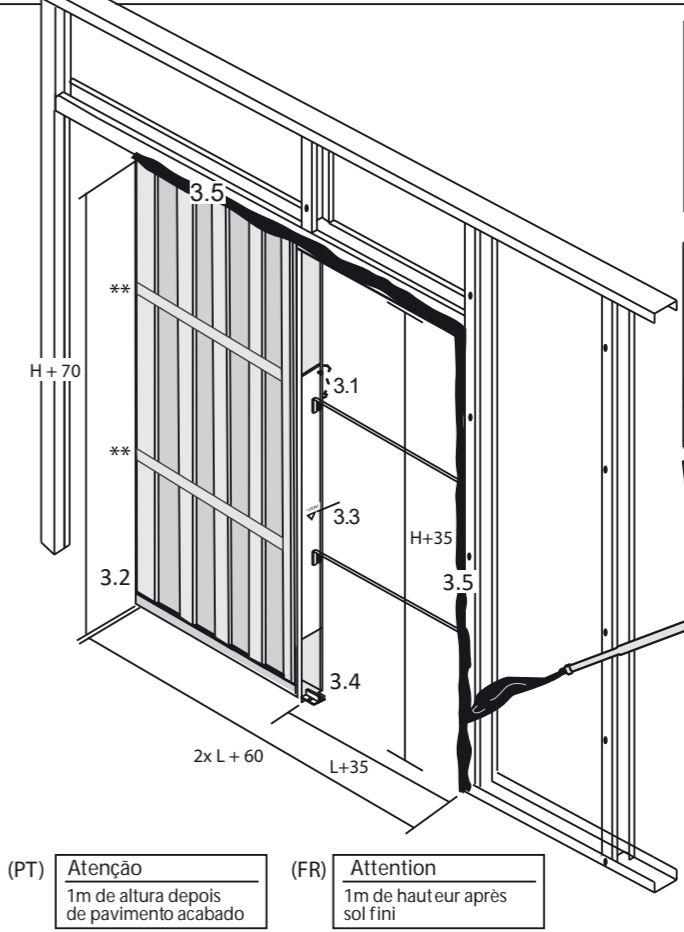
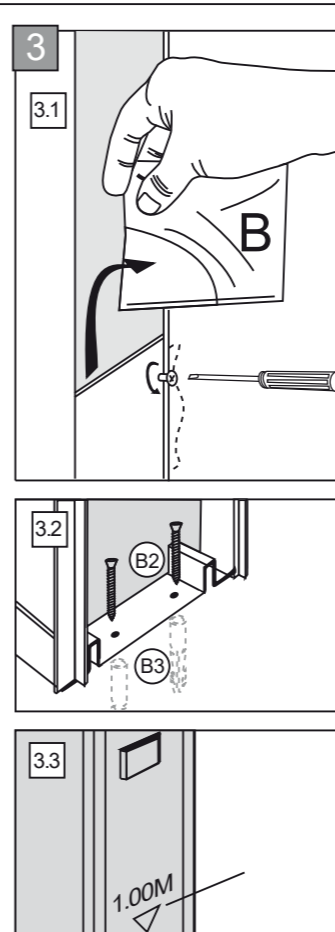
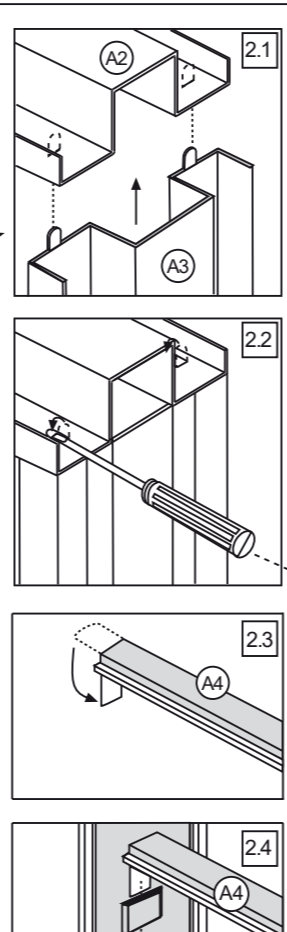
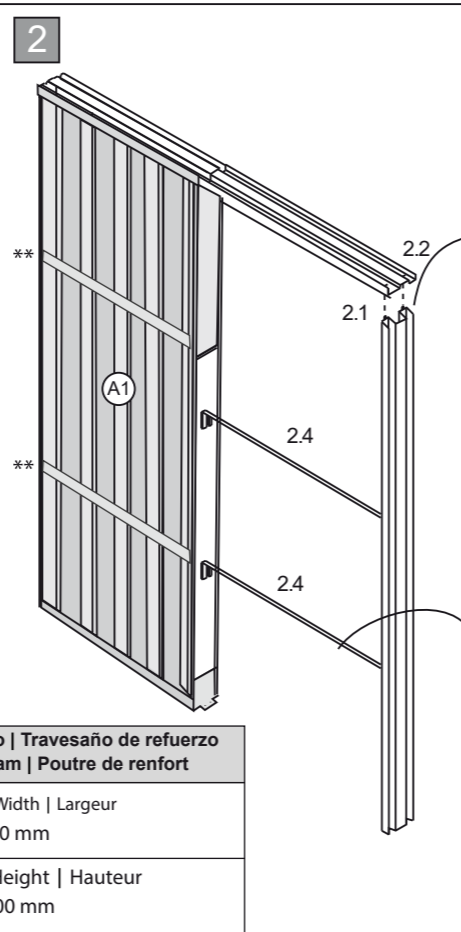
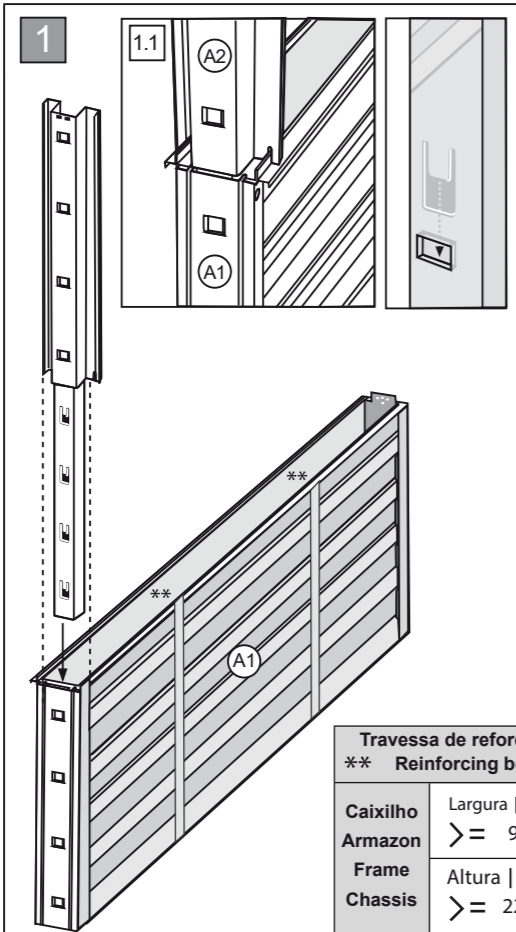
10x (C3) 4x40



1x (C4) Ref. 4003



2x (C5) Ref. 14002



**Travessa de reforço | Travesaño de refuerzo**  
\*\* Reinforcing beam | Poutre de renfort

Caixilho Armaçon Frame Chassis	Largura   Width   Largeur >= 900 mm
	Altura   Height   Hauteur >= 2200 mm

\*\* Obriga a aplicação de 2 placas de gesso em cada face  
Obtiene la aplicación de 2 placas de yeso en cada cara  
Requires the application of 2 plasterboard on each face  
Nécessite l'application de 2 plaques de plâtre sur chaque face

(PT) **Atenção**  
1m de altura depois de pavimento acabado

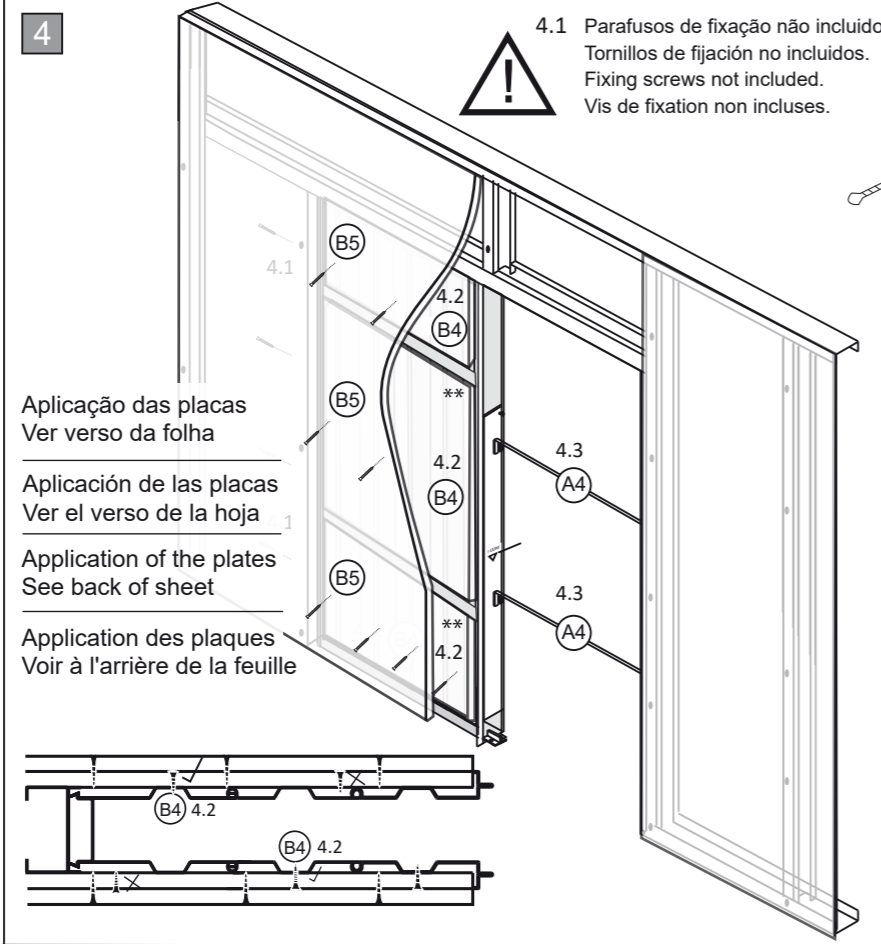
(ES) **Advertencia**  
1m de altura después del suelo acabado

(FR) **Attention**  
1m de hauteur après sol fini

(EN) **Warning**  
Height of 1m after finished floor

H Altura da porta  
Altura de la puerta  
Hauteur de porte  
Door height

L Largura da porta  
Ancho de la puerta  
Largeur de la porte  
Door width



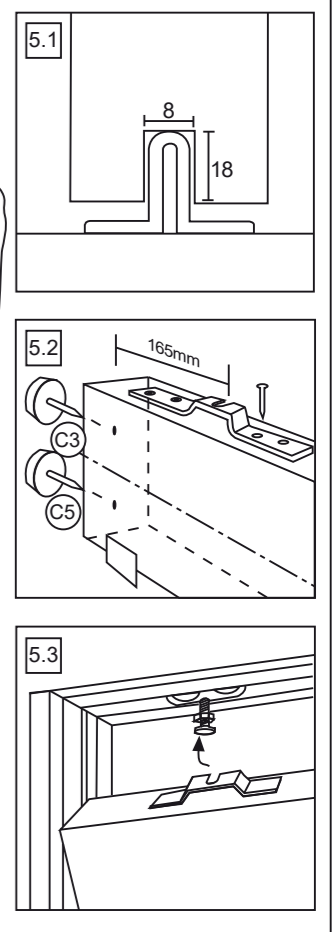
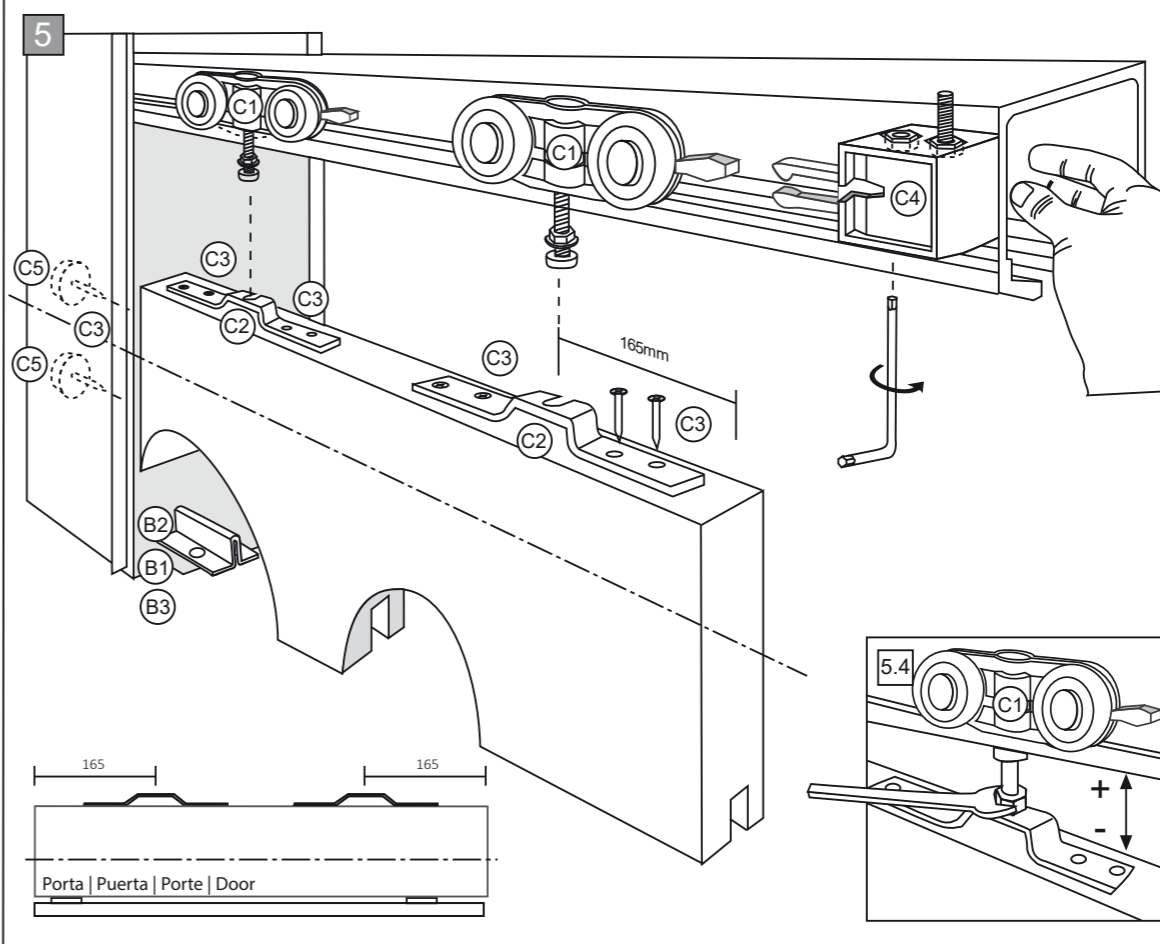
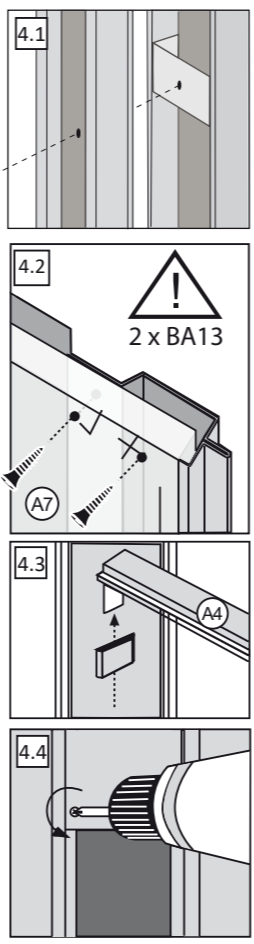
Aplicação das placas  
Ver verso da folha

Aplicación de las placas  
Ver el verso de la hoja

Application of the plates  
See back of sheet

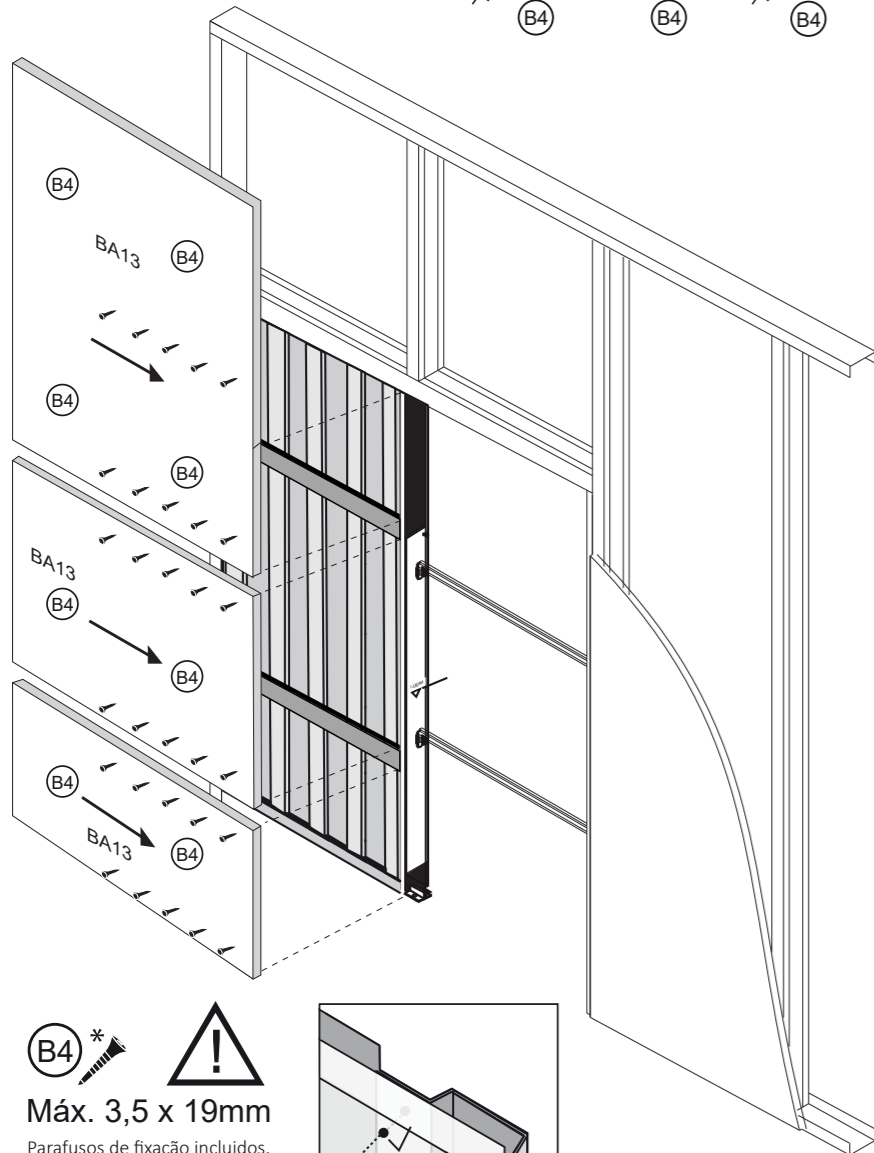
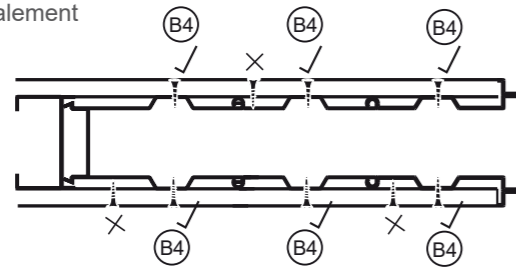
Application des plaques  
Voir à l'arrière de la feuille

4.1 Parafusos de fixação não incluídos.  
Tornillos de fijación no incluidos.  
Fixing screws not included.  
Vis de fixation non incluses.

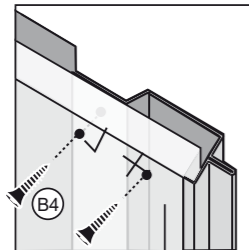


Aplicação da 1ª camada na horizontal  
Aplicación de la primera capa horizontal  
Applying the 1st layer horizontally  
Appliquer la 1ère couche horizontalement

62X (B4)\*

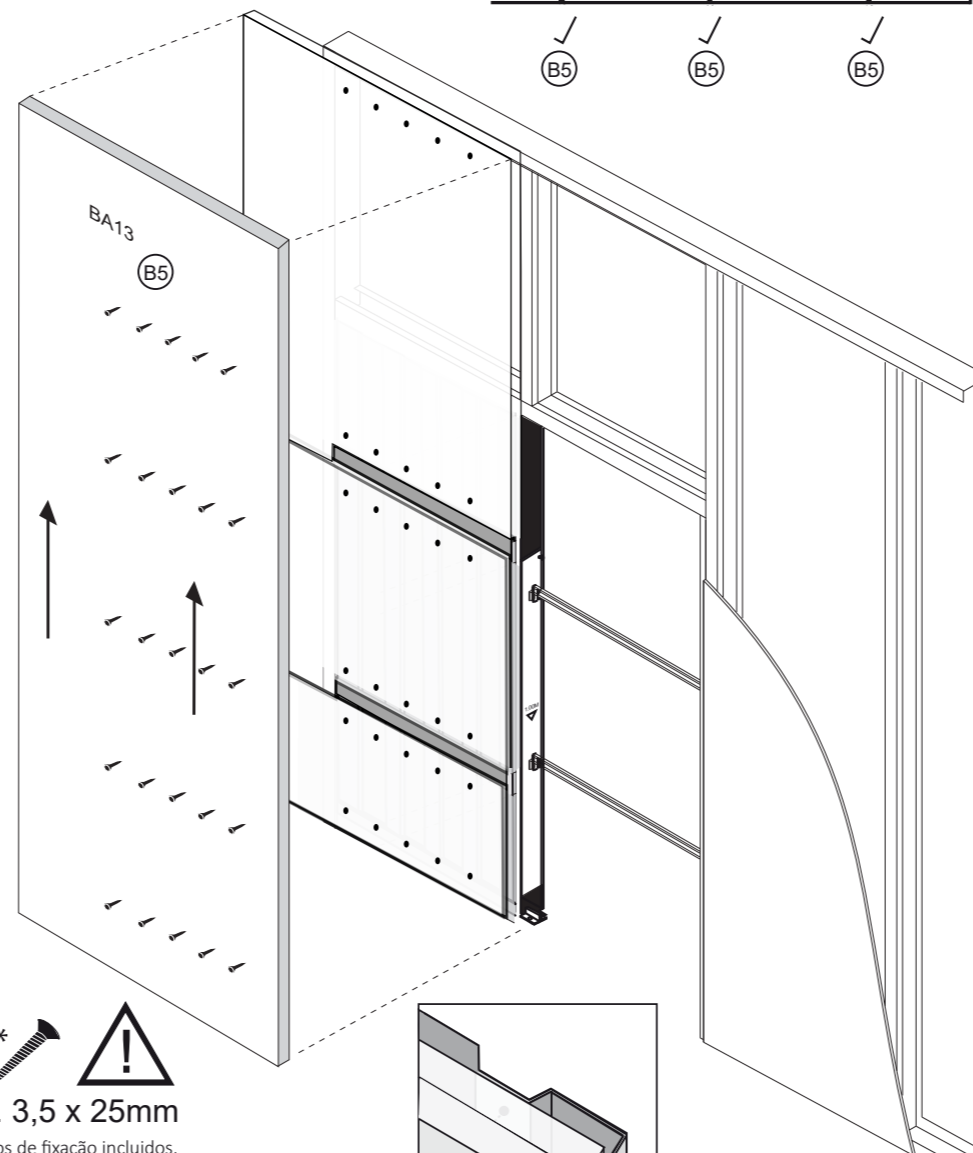
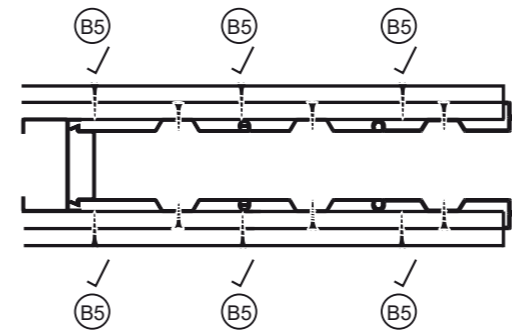


(B4)\*  
Máx. 3,5 x 19mm  
Parafusos de fixação incluídos.  
Tornillos de fijación incluidos.  
Fixing screws included.  
Vis de fixation incluses.

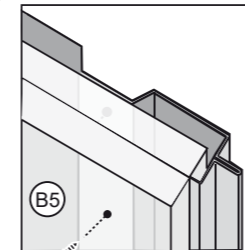


Aplicação da 2ª camada na Vertical  
Aplicación de la segunda capa en la vertical  
Applying the 2nd layer in the Vertical  
Appliquer la 2ème couche dans le Vertical

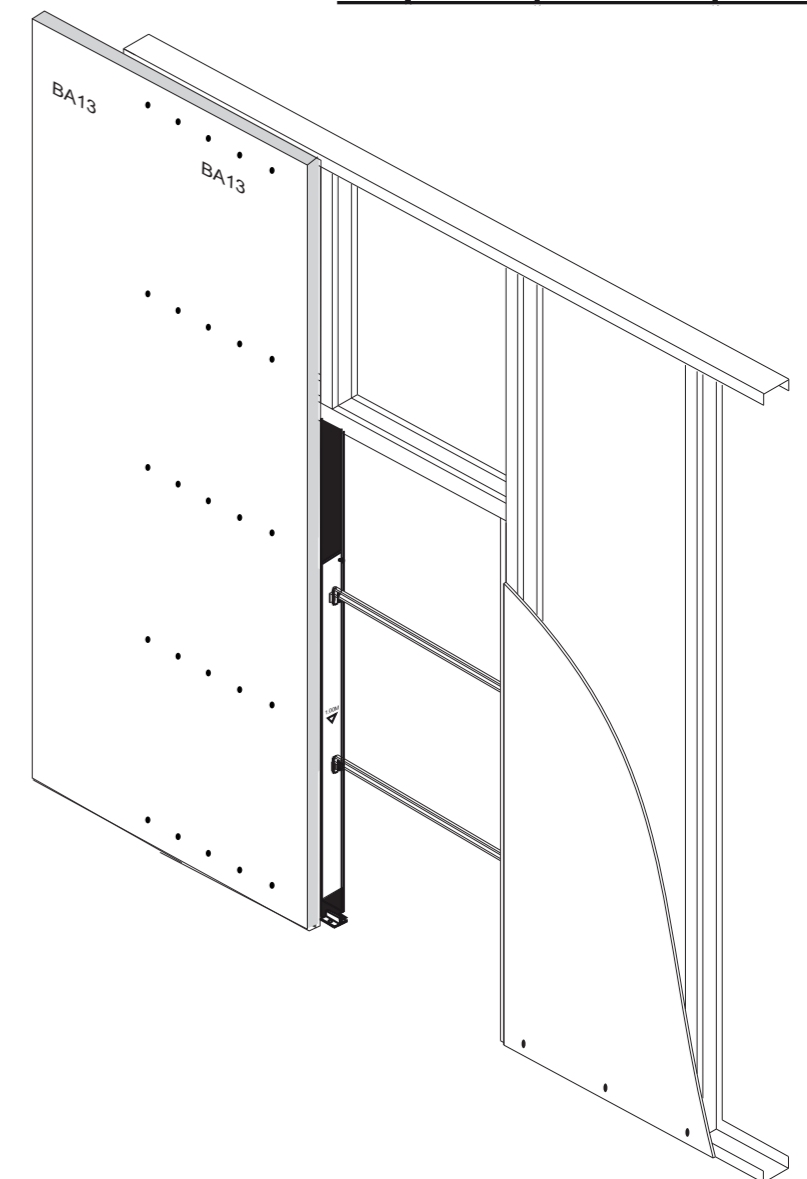
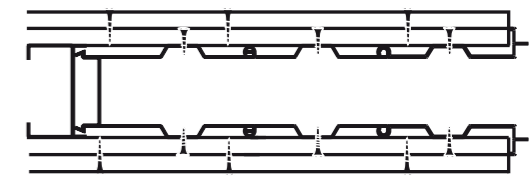
52X (B5)\*



(B5)\*  
Máx. 3,5 x 25mm  
Parafusos de fixação incluídos.  
Tornillos de fijación incluidos.  
Fixing screws included.  
Vis de fixation incluses.



Finalização da aplicação  
Finalización de la aplicación  
Finishing the application  
Finir l'application



## Atenção

Aplicável a todos os caixilhos com largura superior a 900mm e a altura superior de 2200mm de altura.

É obrigatório colocar 2 camadas de gesso cartonado sobre cada lateral do caixilho.

## Advertencia

Aplicable a todos los marcos con anchura superior a 900mm y la altura superior de 2200 mm de altura.

Es obligatorio colocar 2 capas de yeso cartonado sobre cada lateral del marco.

## Attention

Applicable to all pocket frame with a width of more than 900mm and an upper height of 2200mm in height.

It is mandatory to place 2 layers of plasterboard on each side of the frame.

## Warning

Applicable à tous les châssis d'une largeur de plus de 900 mm et d'une hauteur supérieure de 2200 mm.

Il est obligatoire de placer 2 couches de plaques de plâtre de chaque côté du cadre.